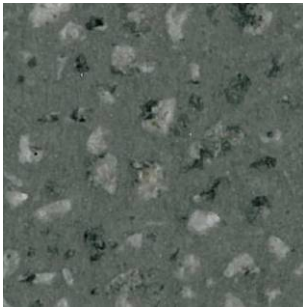
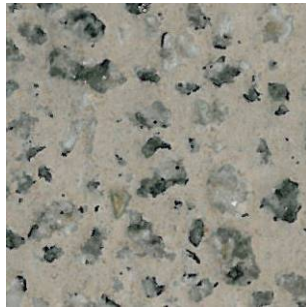


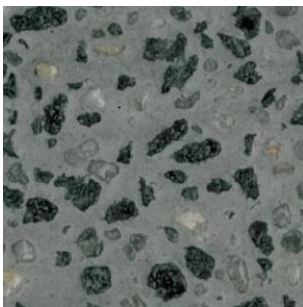
Naturewalk Pave



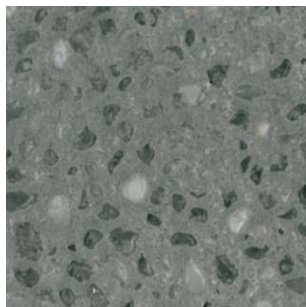
Silver Grey



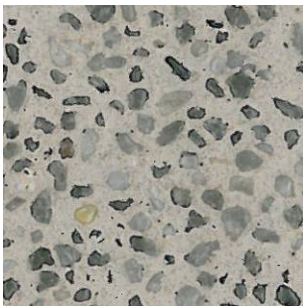
Stone Grey



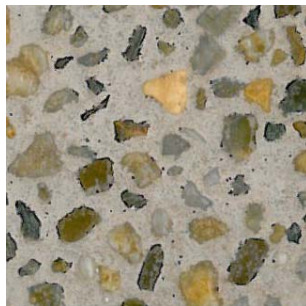
Black Ash



Ash Grey



Ash Stone



Rhinestone

The applied colours may differ slightly from the examples shown above.
Contact our customer services for a true colour sample or a special colour match.

Description

Naturewalk Pave is a seamless and slip-resistant resin bound gravel system, used primarily to surface outdoor areas. A range of natural stone aggregates are bound into a UV resistant solvent free polyurethane resin binder.

Note

Changing the colour of the grout with the same aggregate blend can create a totally different effect.

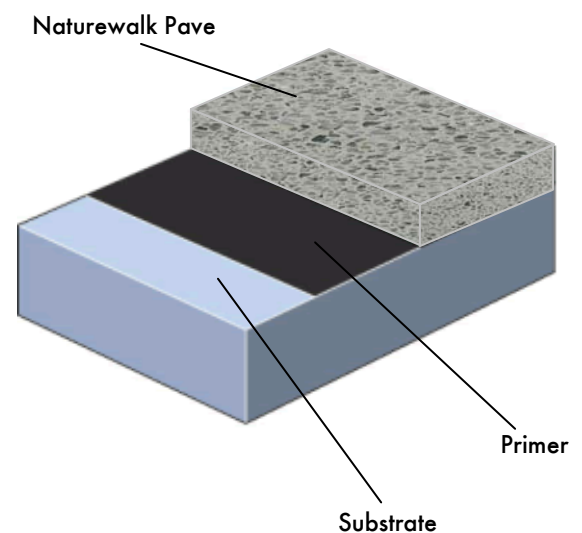
Uses

Naturewalk Pave has been designed to ensure that walkways and external concourse areas reflect the natural beauty of the outdoors. Naturewalk Pave is ideally suited to outdoor environments subject to heavy footfall such as leisure complexes, theme parks, holiday resorts or other public points of interest.

Benefits

- Offers an excellent slip resistant profile.
- Capable of withstanding heavy footfall and vehicular traffic.
- Available in a decorative range of natural stone aggregates.
- Offers a durable alternative to loose stone or gravel.
- Offers a seamless alternative to block paving, eliminating the cracks where weeds can grow and dirt can dwell.

System Design



Model Specification

System: Naturewalk Pave
Finish: Natural stone
Thickness: 12 - 18 mm (as required)
Mix design: _____
Preparatory work and application in accordance with suppliers instructions.
Supplier: Flowcrete UK Ltd.
Telephone : Customer Services +44 (0)1270 753000

Substrate Requirements

Good quality road grade waterproof mastic asphalt or a concrete or screed substrate (with a minimum of 25N/mm² compressive strength), free from laitance, dust and other contamination. The substrate should be surface dry to 100% RH as per BS8204 and free from rising damp and ground water pressure.

NB: Technical proposals and mix designs are written for each installation to meet the client's particular requirements.

Actual quantities required will be dependant upon the substrate porosity, profile and aggregate size. Detailed application instructions are available upon request.

Installation Service

The installation should be carried out by a Flowcrete approved contractor with a documented quality assurance scheme. Obtain details of our approved contractors by contacting our customer service team or enquiring via our web site www.flowcrete.co.uk

Focus on the Floorzone

Flowcrete UK Ltd are market leaders in specialist industrial and commercial flooring. Systems available include: underfloor heating systems, floor screeds, surface damp proof membranes, decorative floor finishes, seamless terrazzo, car park deck waterproofing, tank lining systems... to name just a few.

Our objective is to satisfy your Floorzone needs.

Environmental considerations

The finished system is assessed as non-hazardous to health and the environment. The long service life and seamless surface reduce the need for repairs, maintenance and cleaning. Environmental and health considerations are controlled during manufacture and application of the products by Flowcrete staff and fully trained and experienced contractors.

Technical Information

The figures that follow are typical properties achieved in laboratory tests at 20 °C and at 50% Relative Humidity.

Reaction to fire	B _{FL} -s1	EN 13501-1
Compliant with the requirements for a Class 0 surface as defined in the Building Regulations 2000 (in Paragraph A13(b) of approved document B [2006 edition]).		
Impact Resistance	13 Nm	ISO 6272-1
Temperature Resistance	Softens over 70 °C, hardens on cooling.	
Water Permeability	Nil - Karsten test (Impermeable).	
Chemical Resistance	Contact Technical Department. Good resistance to tea, coffee, cola, fruit juice, detergents and bleach. Note: for unsealed aggregates, some staining may occur in the natural stone.	
Abrasion Resistance	Dependant upon aggregate selection. Use bauxite for heavier duty wear and vehicular traffic. EN 13892-4 test is not appropriate because of the surface profile of the system.	
Bond Strength	Greater than the cohesive strength of 25 N/mm ² concrete. >1.5 N/mm ² .	
Slip Resistance	Dry >40 low slip potential Wet >40 low slip potential Method described in BS 7976-2 (typical values for 4-S rubber slider) (in accordance with HSE and UKSRG guidelines)	

The slipperiness of flooring materials can change significantly, due to the installation process, after short periods of use, due to inappropriate maintenance, longer-term wear and/ or surface contaminants (wet or dry).

Textured systems are recommended to meet slip resistance value requirements for wet conditions and/ or surface contaminants (wet or dry) - please contact our Technical Advisors for further details and specifications.

Speed of Cure (from application of final layer)

	10 °C	20 °C	30 °C
Light traffic	30 hrs	16 hrs	10 hrs
Full traffic	36 hrs	24 hrs	16 hrs
Full chemical cure	12 days	7 days	5 days

Aftercare - Cleaning and Maintenance

Sweep surface occasionally. Use a power washer and/or rotary scrubber with a mildly alkaline detergent to remove surface dirt.

Important Notes

Flowcrete's products are guaranteed against defective materials and manufacture and are sold subject to its standard Terms and Conditions of Sale, copies of which can be obtained on request.

Any suggested practices or installation specifications for the composite floor or wall system (as opposed to individual product performance specifications) included in this communication (or any other) from Flowcrete UK Ltd constitute potential options only and do not constitute nor replace professional advice in such regard. Flowcrete UK Ltd recommends any customer seek independent advice from a qualified consultant prior to reaching any decision on design, installation or otherwise. .